

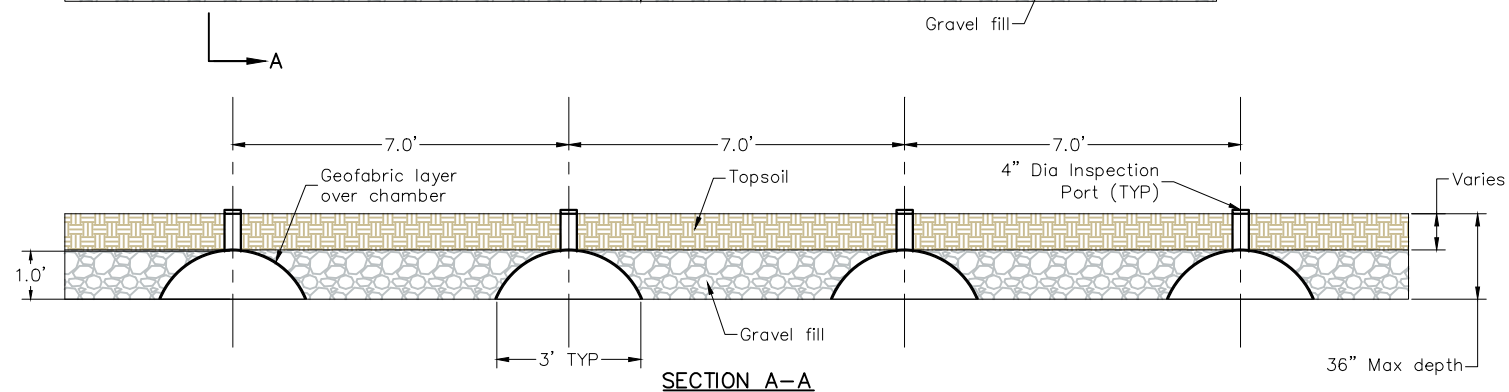
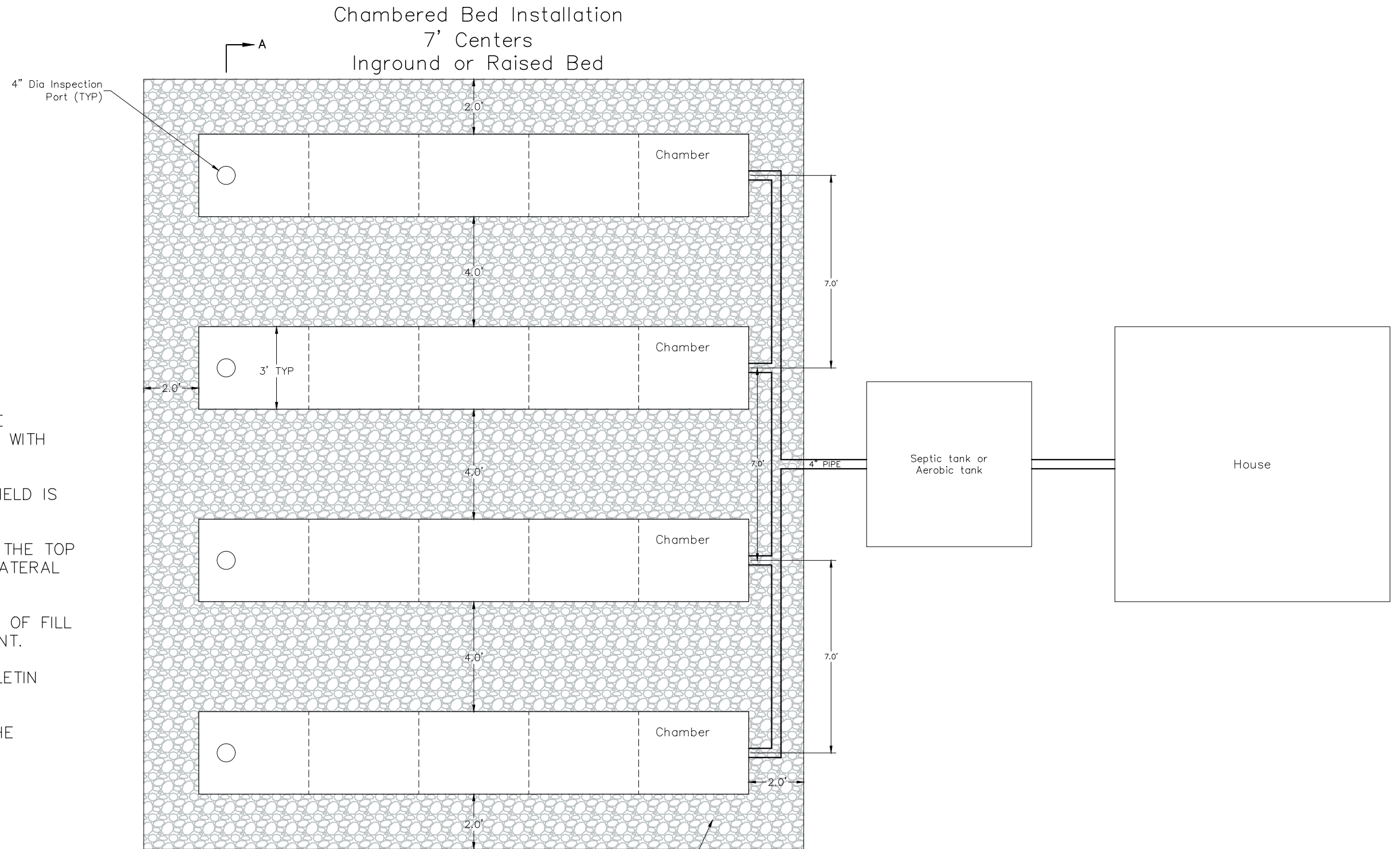
Chamber Bed System Design - Handout #29



Environmental
600 Scott Blvd
South Hutchinson, KS
67505
Phone: 620-259-2105

GENERAL NOTES

- LOW PRESSURE PIPE (LPP) MAY BE INSTALLED IN CHAMBERS, CONSULT WITH ENVIRONMENTAL HEALTH STAFF.
- LIFT STATION PRIOR TO LATERAL FIELD IS SITE DEPENDENT.
- INSPECTION PORT EXTENDED THRU THE TOP OF THE LAST CHAMBER IN EACH LATERAL RUN.
- RAISED BED INSTALLATION AMOUNT OF FILL BELOW LATERALS IS SITE DEPENDENT.
- GRAVEL ROCK FILL PER KDHE BULLETIN 4-2.
- GEOFABRIC SPECIFICATION PER KDHE BULLETIN 4-2.



<i>CHAMBER BED</i>	
<i>PLAN & PROFILE</i>	
<i>DRAWN BY:</i> GRB	<i>DATE:</i> 10/10/2023
<i>CHECKED BY:</i>	<i>DRAWING NO.:</i>
<i>JOB NO.:</i>	<i>SHEET 1 OF 1</i>